

Kodak Scan Station 500

Connectivity	10/100 Base T and built-in 56K fax modem, no host PC required
Output Methods	Scan to network share, scan to print, scan to e-mail, scan to fax, scan to portable USB drive, scan to FTP (anonymous, authenticated, with proxy support)
Network Protocols	TCP/IP, SMB, authenticated SMTP (login, plain text, CRAM, NTLM), DHCP (or static), NT domain authentication
Security Features	PDF private key encryption, optional password access, option to enable/disable the ability to scan to portable USB drives, secure login via LDAP, activity logging by Login ID, IP port blocking
Remote Administration (for system administrators only)	Secure login with a customizable password, ability to create and manage lists of Scan Station 500 devices, group and classify managed devices, update the configuration and/or embedded software of one, some or all managed devices, view the status of managed devices, remotely access and manage the logs of a single managed device, restart or power off a single managed device
File Format Outputs	Single and multipage TIFF, JPEG, PDF, text searchable PDF, encrypted PDF, optional JPEG compressed TIFF, WAV audio files
Control Panel	20.3 cm (8 in.) 800x480 TFT LCD with touchscreen
Audio	Built-in microphone and speaker to record and play back Voice Attachment messages
On-board Processor, Memory, Hard Drive	Intel Atom Processor, 1 GB RAM, 160 GB hard drive
Scanning Technology	Duplex scanning with dual color quadlinear CCD, 600 dpi optical resolution, capture bit depth is 30 bits (10 x 3), color output bit depth is 24 bits (8 x 3), grayscale output bit depth is 256 levels (8-bit)
Output Resolution	75, 100, 150, 200, 240, 300, 400, 600 dpi
Imaging Features	Perfect Page Scanning, deskew, autocrop, content-based blank page removal, automatic orientation
Throughput Speeds (portrait, letter size)	Black-and-white/grayscale/color: up to 30 ppm/60 ipm at 200 dpi
Multi-Feed Detection	With ultrasonic technology
Feeder	Up to 75 sheets of 75 g/m ² (20 lb.) paper
Maximum Document Size	215 mm x 863 mm (8.5 in. x 34 in.)- may be restricted at certain resolutions
Minimum Document Size	50 mm x 63.5 mm (2 in. x 2.5 in.); Multiple-sheet feeding: 75 mm x 125 mm (3 in. x 5 in.)
Paper Thickness and Weight	52-413 g/m ² (110 lb.) paper and ID cards up to 1.25 mm (0.05 in.) thick
Recommended Daily Volume	Up to 3,000 pages per day
Approvals and Product Certifications	AS/NZS CISPR 22:2006 Class A (C-Tick Mark), CAN/CSA-C22.2 No. 60950-1 (TUV C Mark), Canada ICES-003 Issue 4 (Class A), GB4943, GB9254 (Class A), GB 17625.1 Harmonics (CCC "S&E" Mark), EN 55022 ITE Emissions (Class A), EN 61000-3-3 Flicker, EN 55024 ITE Immunity (CE Mark), EN 60950 (TUV GS Mark), IEC 60950-1, VCCI (Class A), CNS 13438 (Class A), CNS 14336 (BSMI Mark), UL 60950-1 (TUV US Mark), CFR 47 Part 15 Subpart B (FCC Class A), Argentina S-Mark
Dimensions	Weight: 10.5 kg (23 lbs.); Depth 38.1 cm (15 in.); Width: 34.9 cm (13.8 in.); Height: 20.8 cm (8.2 in.)
What's in the Box	Kodak Scan Station 500, power cords, User's Guide, Setup & Documentation CD-ROMs, Installation Guide, one portable USB drive, configuration organizer software, scanner administration software
Recommended PC Configuration for configuration organizer software and scanner administration software	Pentium 4 , 2.8 GHz processor, 1 GB RAM, USB 2.0, running Windows XP, Windows Vista, or Windows 7
Accessories Available	Portable USB drives, Kodak Scan Station 500 Keyboard and Stand Accessory, Kodak A3 Flatbed Accessory, Kodak A4 Flatbed Accessory
Consumables Available	Feed modules, roller cleaning pads, Staticide Wipes
Software Available	NSi AutoStore Client enabled, other NSi AutoStore applications available
Warranty (US and Canada)	90-day warranty
Recommended portable USB drive specs	USB 2.0, minimum size for configuration: 32 MB, minimum size for storing images/files: 128 MB
Environmental Factors	Operating temperature: 10-35° C (50-95° F); Operating humidity: 10% to 85% RH, Altitude <2000M or 6562 Feet
Illumination	Dual Fluorescent (Cold Cathode)
Power Consumption	Off mode: <4 Watts; Operating mode: <95 Watts
Interfaces	On rear panel: four USB 2.0 ports, one RJ45 10/100 Base T Ethernet port, one custom flatbed port and one RJ11 telephone jack On bezel: one USB 2.0 port



Kodak
Service & Support

To receive email updates and special offers from the Kodak Document Imaging Team, visit www.kodak.com/go/DIsubscribe

To learn more:
www.kodak.com/go/getyourScanStation

Printed using Kodak Technologies.

Eastman Kodak Company
343 State Street, Rochester, NY 14650 1-800-944-6171

Kodak Canada, Inc.
Toronto, Ontario M9R 0A1 1-800-465-6325

©Kodak, 2010. Kodak is a trademark of Kodak.
Subject to technical change without notice.
A-5806 CAT No. 172 4426 Printed in USA 03/10

WE DIDN'T BUILD IT TO KEEP YOUR BUSINESS COMPETITIVE.

WE BUILT IT TO PUT YOU IN THE LEAD.

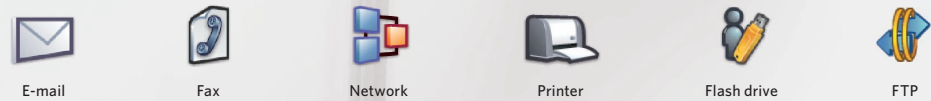


Kodak
Scan Station 500

Add performance and power — in a small package — to your business.

Getting documents into the workflow fast is essential. Helping your business do more with those documents is even more important. That's why we built the **Kodak Scan Station 500**. It's a network scanning device loaded with smart features that make it easy to integrate, manage, and scan.

Now with a host of powerful remote administration functions to give system administrators control over your networked Scan Station 500 devices.



The smart, fast, easy, friendly, quiet, secure, remotely controlled Kodak Scan Station 500.

BUILT WITH A PURPOSE.

Send information. Not just data.

Our exclusive Voice Attachment feature gives you the option to record and send essential directions with your documents.

Make sure everyone gets the message.

With one scan, send a document to the network, to e-mail, to the printer, to fax, to a USB drive, and to FTP — simultaneously!

Built for Remote Administration:

- Create and manage lists of Scan Station 500 devices
- Group and classify managed devices
- Update the configuration and embedded software of one, some or all managed devices
- View the status of managed devices
- Remotely access single managed devices

Built to be Faster:

- Up to 9X faster than the competition (200 dpi, color duplex mode)
- Scan up to 3,000 pages per day
- Auto orientation reduces document prep time and labor
- Robust and versatile paper handling
- Feeder tray accommodates up to 75 pages
- Single-pass, double-sided scanning saves time

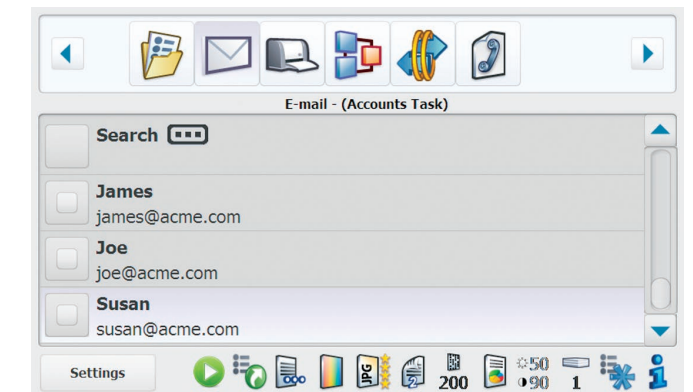
Built to be Secure:

- Enable or disable scanning to portable flash drives
- User Authentication based upon standard **Windows** OS authentication
- Transaction log tracks all usage
- Tighter security to help prevent malicious access
- PDF private key encryption
- Secure login via LDAP

Built to be Easy to Use:

- Intuitive touchscreen operation

- Blank Page Removal instantly reduces file size
- Frequent job settings can be programmed for timesaving convenience
- Easy to configure remotely
- Kodak's Perfect Page Scanning for great image quality — automatically
- LDAP address lookup is compatible with your company directory
- Files can be named according to your company standards



The large 20.3 cm (8 in.) LCD touchscreen makes it easy for everyone to scan and share.

Built to be Office Friendly:

- Whisper-quiet operation
- Integrated fax/modem — no need for a separate fax machine
- Scan and send with one device — no additional hardware or software required
- Ergonomically correct for standing or seated operation
- Ideal for walk-up or dedicated use
- Optional A3 and A4 flatbed accessories allow you to scan oversized and fragile documents

Built to Inspire Confidence:

The award-winning **Kodak** Service & Support professionals are always here to help keep your business running smoothly.



The Kodak Scan Station 500 delivers high performance in a space-saving footprint.